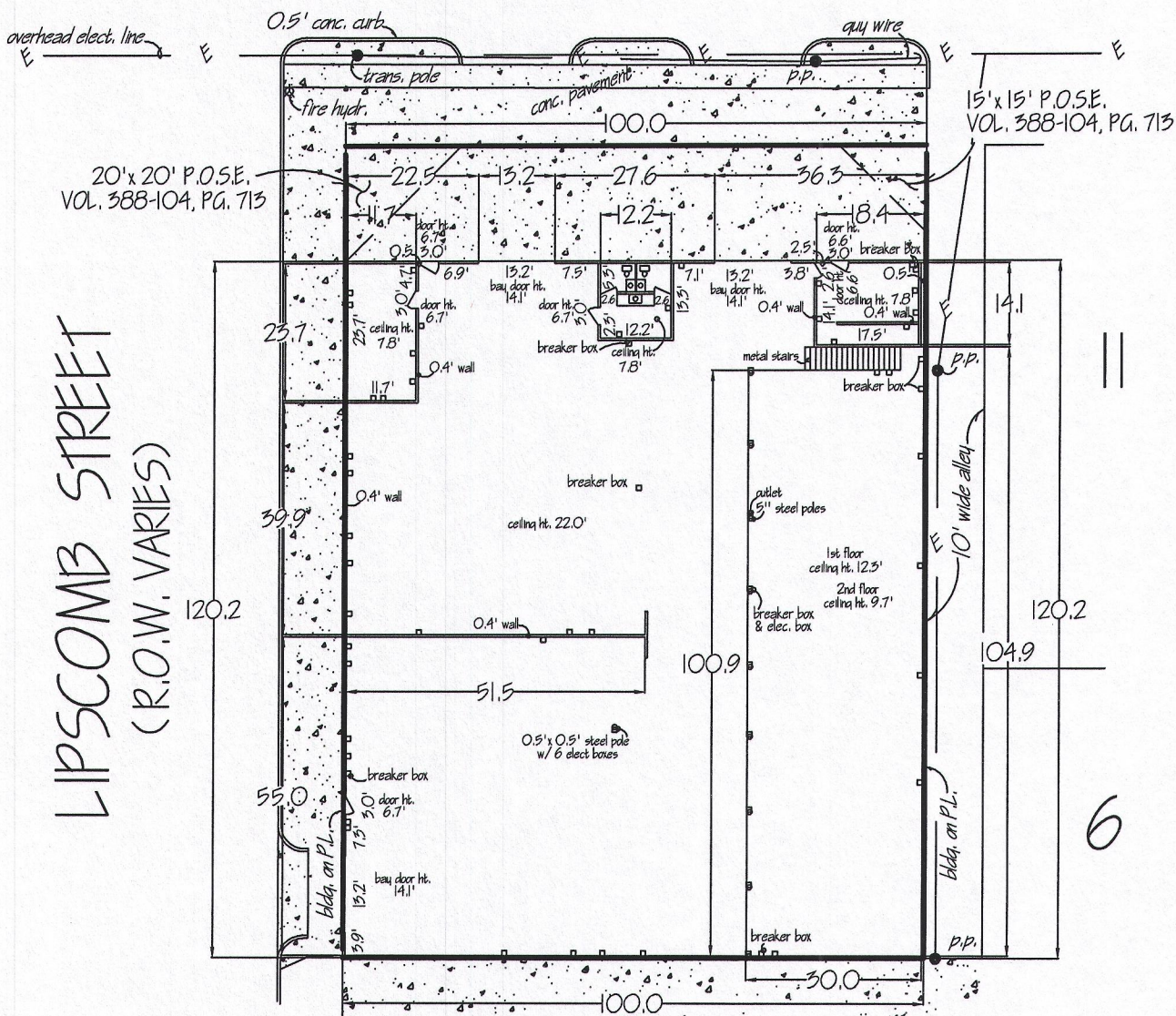


EXHIBIT SHOWING
 Floor Plan
 755 West Broadway Avenue

WEST BROADWAY AVENUE
 (R.O.W. VARIES)



LIPSCOMB STREET
 (R.O.W. VARIES)

9 C.W. PERRY'S SUB.
 VOL. 63, PG. 12 -BLOCK 35-

22

Notes:
 □ = elec. box unless otherwise noted
 Scale: 1" = 30'

FULTON SURVEYING, INC.
 115 ST. LOUIS AVENUE
 FORT WORTH, TEXAS 76104
 (817) 335-3625
 #12128floorplanFAX (817) 335-3629